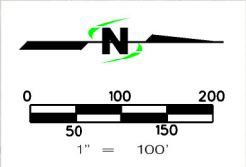


EXHIBIT MAP FOR
**BULL RIVER TRAIL
UPON PART OF DRY CREEK HIGHLANDS
PHASES 1, 2 AND 3**
SITUATE IN THE SE1/4NE1/4 AND THE NE1/4SE1/4 OF SECTION 27,
TOWNSHIP 4 SOUTH, RANGE 1 EAST, SALT LAKE BASE & MERIDIAN
HIGHLAND CITY, UTAH COUNTY, UTAH



NARRATIVE

PURPOSE: THE PURPOSE OF THIS EXHIBIT MAP IS TO SHOW THE CONSTRUCTED LOCATION OF THE BULL RIVER TRAIL IN RELATION TO THE RECORDED BOUNDARIES OF LOT 33, DRY CREEK HIGHLANDS PHASE 1, LOTS 201 THRU 209, DRY CREEK HIGHLANDS PHASE 2, AND LOTS 301 THRU 310, DRY CREEK HIGHLANDS PHASE 3, ACCORDING TO THE OFFICIAL PLATS THEREOF ON FILE AT THE OFFICE OF THE UTAH COUNTY RECORDER.

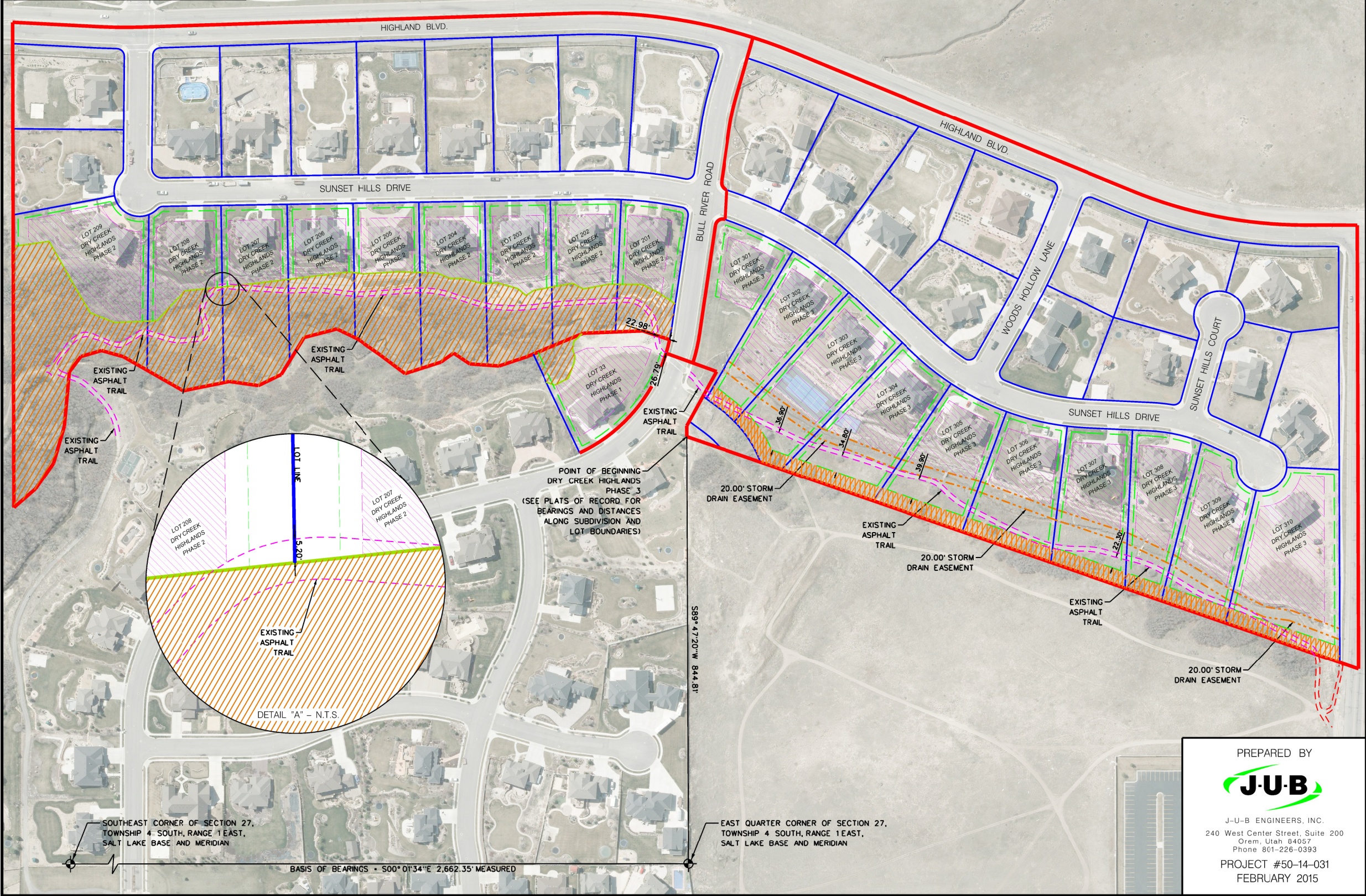
RESULTS: AS IT PERTAINS TO LOT 33, DRY CREEK HIGHLANDS PHASE 1, THE PLAT OF RECORD DOES NOT SHOW A TRAIL EASEMENT UPON SAID LOT. NEVERTHELESS, A PORTION OF THE TRAIL WAS CONSTRUCTED WITHIN THE BOUNDARIES OF LOT 33 AS SHOWN.

AS IT PERTAINS TO LOTS 201 THRU 209, DRY CREEK HIGHLANDS PHASE 2, THE TRAIL LIES ENTIRELY WITHIN ITS PLATTED EASEMENT BOUNDARIES EXCEPT FOR AN AREA OF ENCROACHMENT UPON LOTS 207 AND 208. SEE DETAIL "A" HEREON.

AS IT PERTAINS TO LOTS 301 THRU 310, DRY CREEK HIGHLANDS PHASE 3, THE TRAIL LIES ALMOST ENTIRELY OUTSIDE OF ITS PLATTED EASEMENT BOUNDARIES AS SHOWN.

LEGEND

- SUBDIVISION BOUNDARIES
- LOT LINES
- P.U.E. AND DRAINAGE EASEMENT LINES
- EXISTING ASPHALT TRAIL
- BUILDABLE AREAS
- CONSERVATION AND TRAIL EASEMENT (UPON PHASE 2)
- 30.00' PUBLIC TRAIL EASEMENT (UPON PHASE 3)
- 20.00' OPEN CHANNEL STORM DRAIN EASEMENT (UPON PHASE 3)
- UTAH COUNTY
CD ENTRY 107753:2005
SEE NARRATIVE NOTE # 2



PREPARED BY
J-U-B
J-U-B ENGINEERS, INC.
240 West Center Street, Suite 200
Orem, Utah 84057
Phone 801-226-0393
PROJECT #50-14-031
FEBRUARY 2015

EXHIBIT MAP FOR
**BULL RIVER TRAIL
UPON PART OF
DRY CREEK HIGHLANDS
PHASES 1, 2 AND 3**
SITUATE IN THE SE1/4NE1/4 AND THE NE1/4SE1/4 OF SECTION 27,
TOWNSHIP 4 SOUTH, RANGE 1 EAST, SALT LAKE BASE & MERIDIAN
HIGHLAND CITY, UTAH COUNTY, UTAH
SCALE 1" = 100' SHEET 1 OF 1