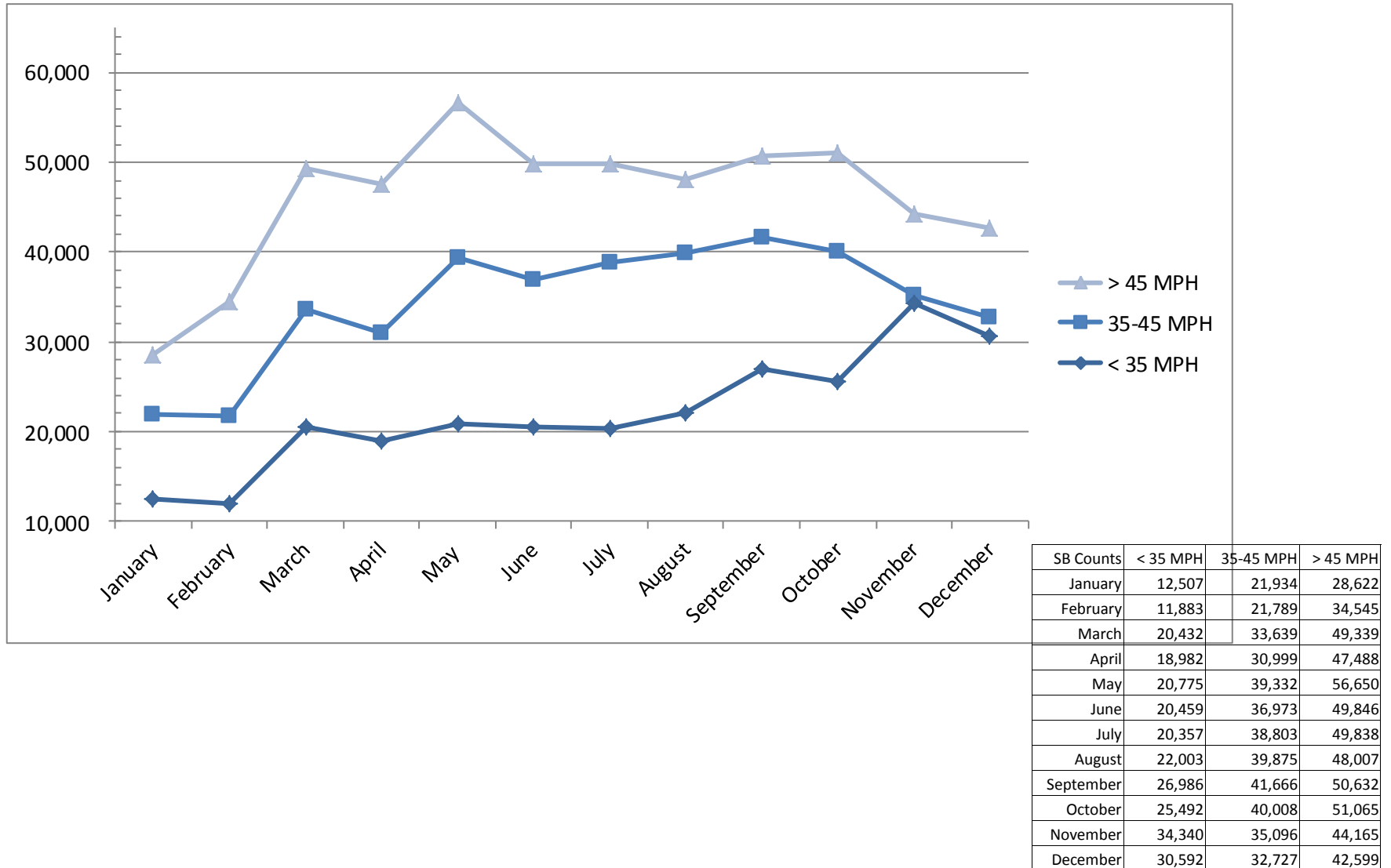


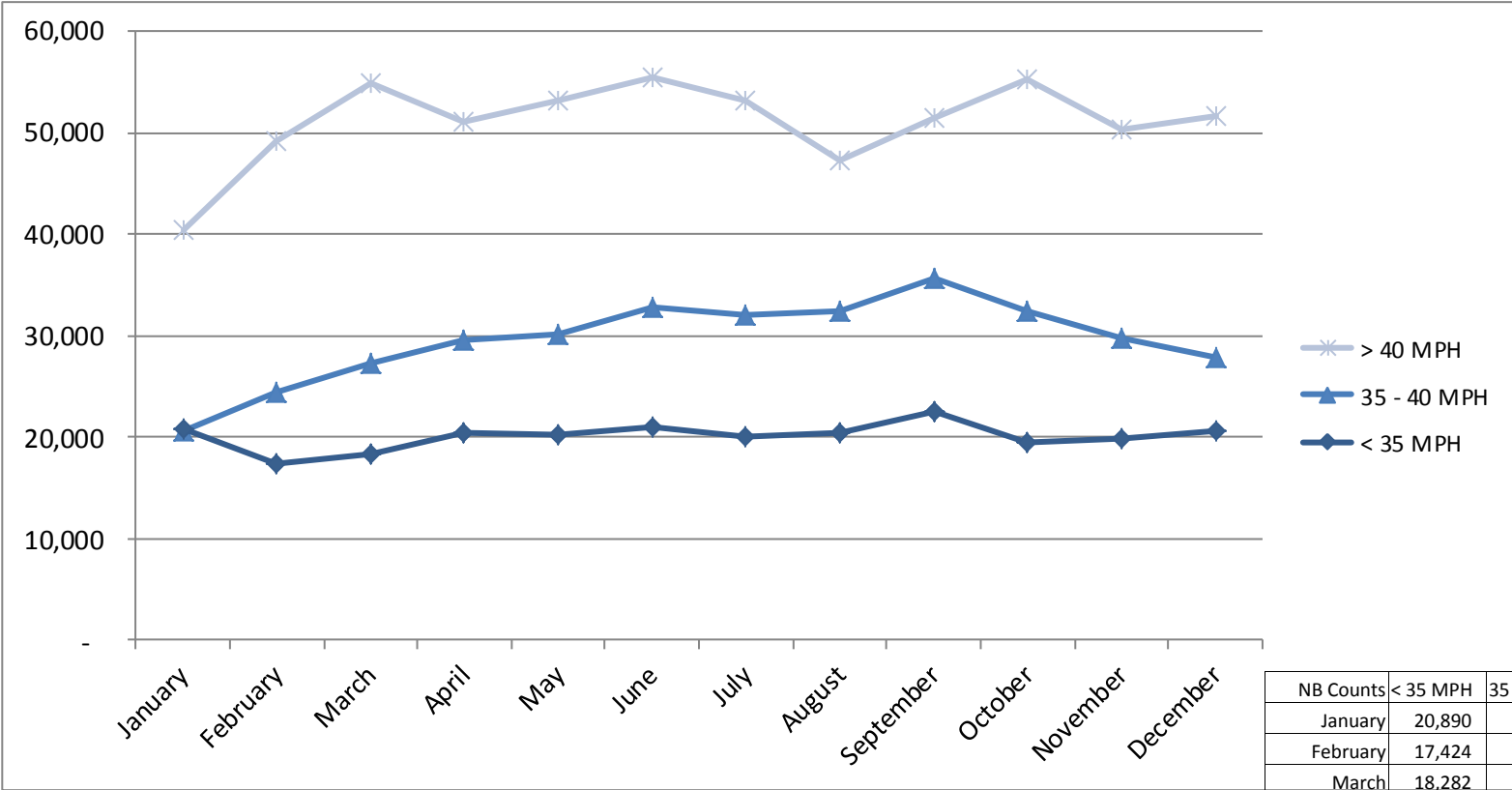
Highland Boulevard Southbound

Traffic Speed/Volume Count

2016



Highland Boulevard Northbound Traffic Speed/Volume Count 2016

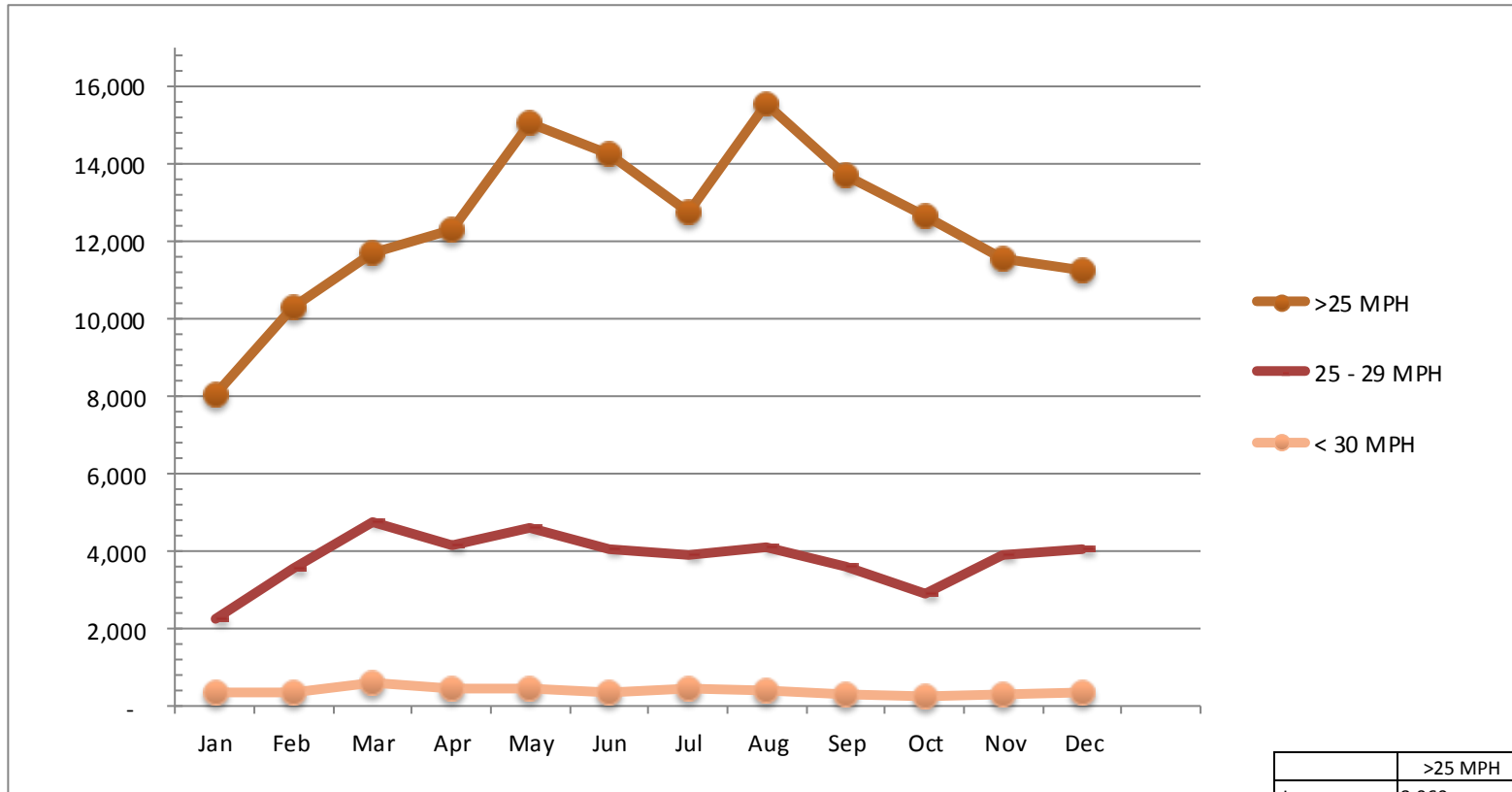


NB Counts	< 35 MPH	35 - 40 MPH	> 40 MPH
January	20,890	20,561	40,395
February	17,424	24,332	49,205
March	18,282	27,358	54,862
April	20,502	29,562	51,142
May	20,243	30,095	53,311
June	20,929	32,813	55,541
July	20,077	31,996	53,260
August	20,438	32,421	47,352
September	22,571	35,650	51,540
October	19,525	32,457	55,346
November	19,919	29,703	50,331
December	20,665	27,801	51,659

Country Club Drive

Traffic Speed/Volume Count

2016

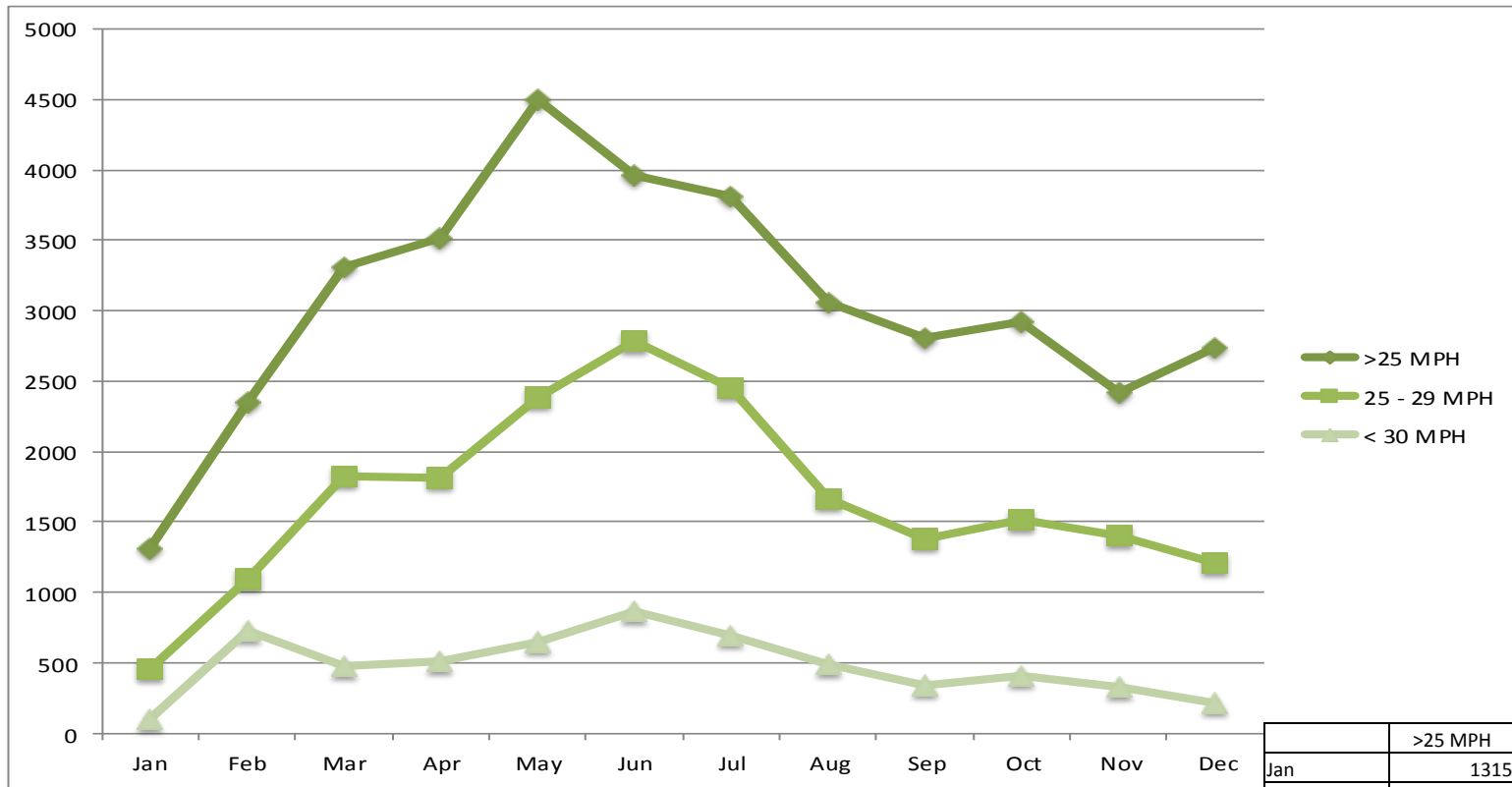


	>25 MPH	25 - 29 MPH	< 30 MPH
Jan	8,060	2,252	342
Feb	10,315	3,567	353
Mar	11,687	4,741	585
Apr	12,331	4,136	458
May	15,066	4,597	454
Jun	14,246	4,058	353
Jul	12,762	3,899	470
Aug	15,574	4,104	395
Sep	13,691	3,599	320
Oct	12,679	2,892	234
Nov	11,564	3,890	312
Dec	11,247	4,054	353

East Jerling Drive

Traffic Speed/Volume Count

2016



	>25 MPH	25 - 29 MPH	< 30 MPH
Jan	1315	455	95
Feb	2351	1090	724
Mar	3314	1823	478
Apr	3512	1816	509
May	4500	2383	649
Jun	3958	2786	859
Jul	3819	2455	693
Aug	3060	1665	482
Sep	2809	1382	344
Oct	2922	1516	406
Nov	2418	1399	330
Dec	2738	1209	214

